

Appendix 1

Dementia Services Review

Design and modelling stage

Update on progress

May 2018

Di Bardwell

Dorset vision

NHS

Dorset

Clinical Commissioning Group

Every person with dementia, and their families and carers, receive high quality, compassionate care from diagnosis to end of life care. This applies to all care settings, whether home, hospital or care home.

YOUR NHS

Working together to shape
Dorset's Health



Outcomes

- I have personal choice and control over the decisions that affect me
- I know that services are designed around me, my needs and my carer's needs
- I have support that helps me live my life
- I have the knowledge to get what I need
- I live in an enabling and supportive environment where I feel valued and understood
- I have a sense of belonging and of being a valued part of family, community and civic life
- I am confident my end of life wishes will be respected. I can expect a good death

Objectives

Through a **co-production approach** and **within the current resources and finances available** through **health and social care**:

- Design and deliver consistent and high quality, compassionate care and support to meet the needs of people living with dementia and their carers from diagnosis to end of life.
- Ensure equity of outcomes for people living with dementia and their carers across Dorset localities.
- Achieve and maintain a diagnosis rate of two thirds of prevalent population.
- Increase the number of people being diagnosed with dementia, and starting treatment, within six weeks from referral.
- Improve quality of post-diagnosis treatment and support for people with dementia and their carers.

Services included in the review

Dorset Healthcare NHS Foundation Trust	48 commissioned inpatient bed - Alderney Hospital
	16 commissioned In-patient beds - Chalbury Unit (currently closed)
	12 commissioned In-patient beds - Betty Highwood (currently closed)
	In-reach service
	Intermediate Care Service for Dementia (ICSD) East –an intensive support service
	Older Persons Community Mental Health Teams
	Haymoor Day Hospital, Alderney
	Melcombe Day Unit, Weymouth
	Memory Assessment Service (MAS)
Alzheimer’s Society	Memory Support and Advisory Service (MSAS)
INTERDEPENDENCIES	Psychiatric Liaison Services
Poole Borough	Care UK: Specialist dementia care at home (domiciliary) Respite provision
Bournemouth Borough Council	Early Help and Prevention services commissioned by BBC to support people living with dementia in the community
Dorset County Council	Care Homes and Respite provision for people with dementia
Acute/Com Hospitals	Hospital links to Community
Various	Information provision Out of Hours crisis services Care home providers providing dementia care Dementia workforce – recruitment, retention and training

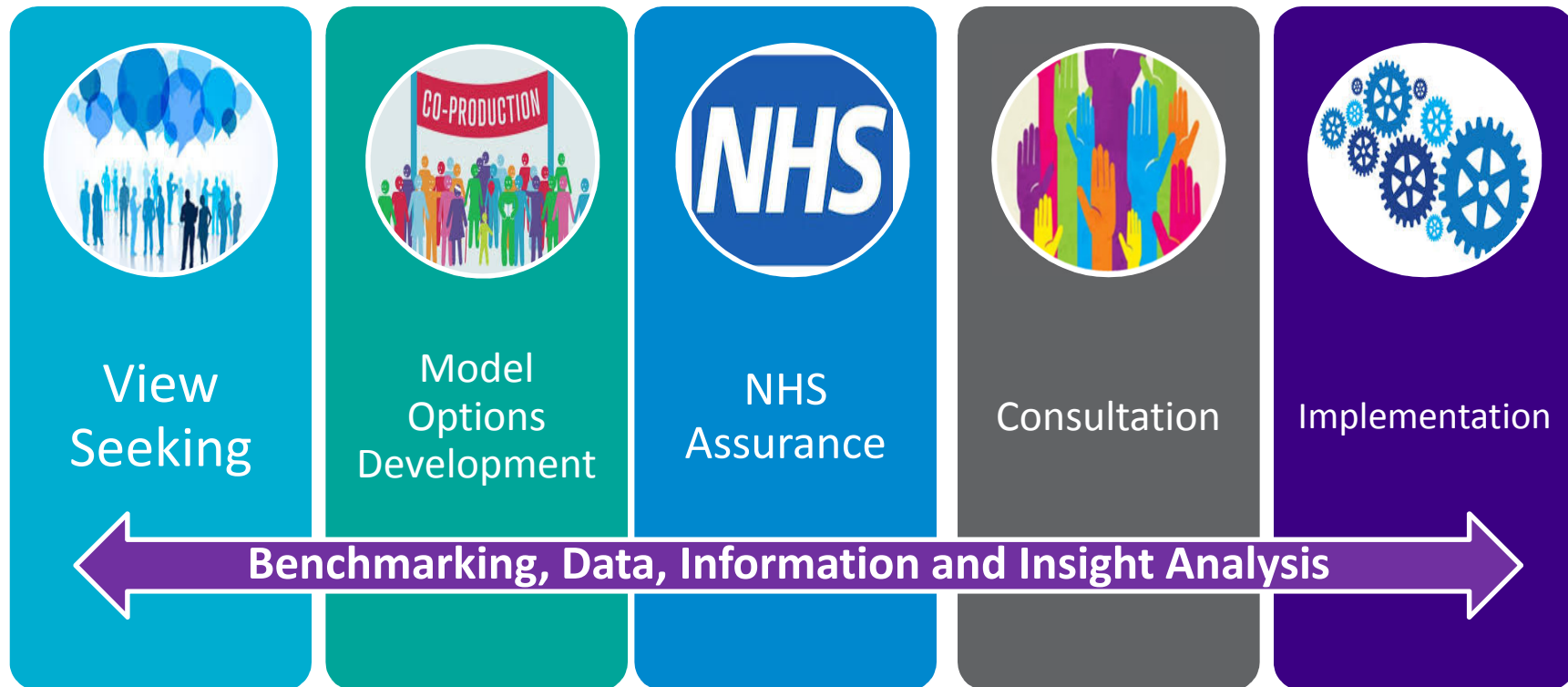
Review process

NHS

Dorset

Clinical Commissioning Group

Going on the journey together to find solutions

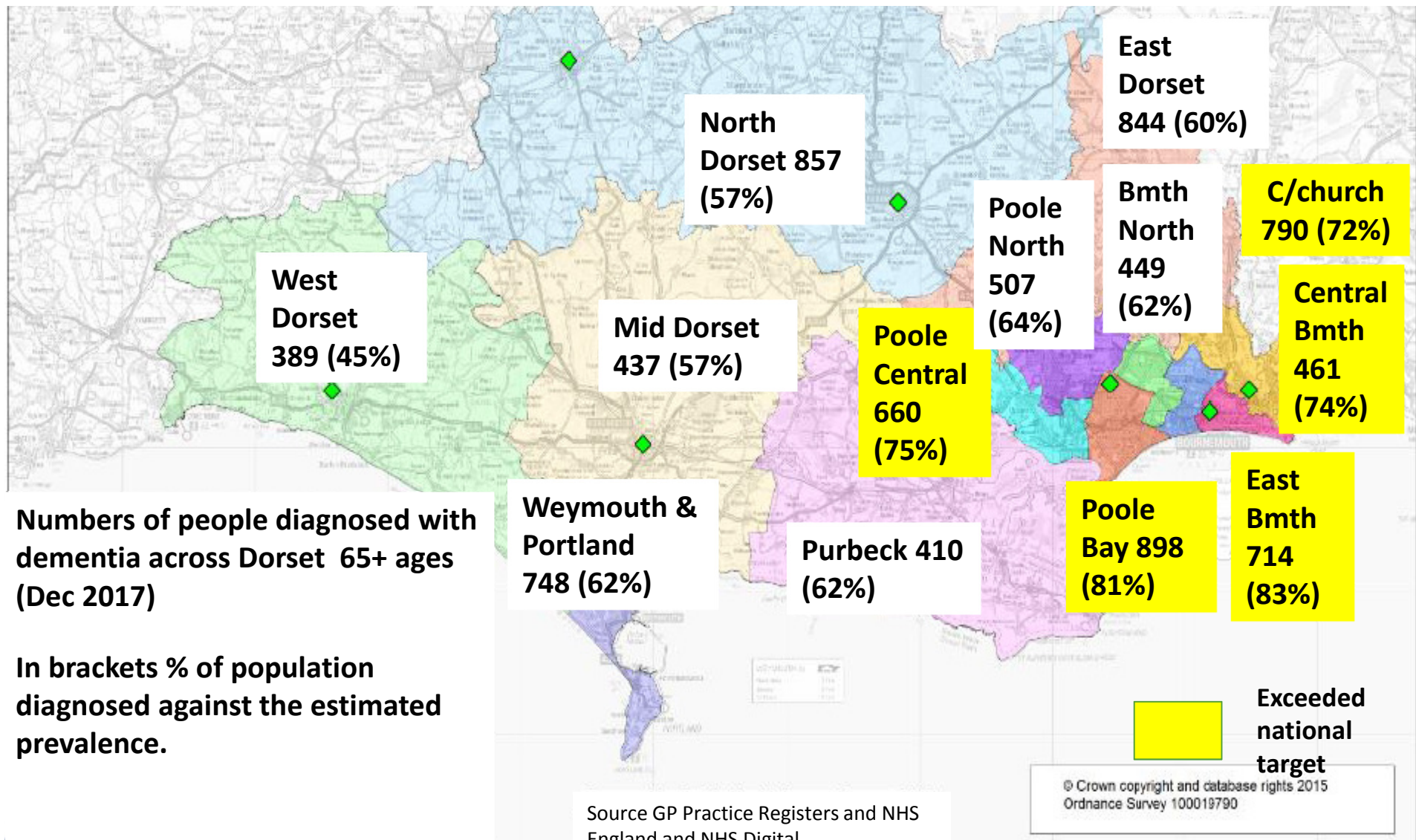


YOUR NHS

Working together to shape
Dorset's Health

NHS England national dementia diagnosis target (Dec 2017)

- Estimated prevalence of 65+ years = 13,164 patients
- Total aged 65+ on dementia registers = 8,164
- Diagnosis rate December 2017 = 62%
- Gap to meet national target of 66.7% = 616 patients



Summaries across stages

DATA AND NEEDS ANALYSIS

Prevalence of dementia in Dorset estimated 13,089

Numbers of people diagnosed appears to have plateaued

Ageing population is increasing

Different demand shown across Dorset localities and rural/urban

61% of people with dementia have other health conditions

Currently 189 people have early onset dementia

Bournemouth localities and the Purbecks have the highest % of people within care homes

ENGAGEMENT & VIEW SEEKING ANALYSIS

Support groups, charities and volunteers identified as working well

Failures in care pathway

Fragmented services

No continuity of staff

Lack of support particularly post-diagnosis

Carers want more involvement in care planning

Awareness raising in general public needed

Services understaffed

Need for better respite options and carer breaks

DESIGN THEMES

Smoother and quicker diagnostic pathway

Joined up services across health and social care

Support, advice and guidance along whole pathway – Dementia Coordinator role

Information and crisis helpline

Improved support for carers

Education and training

Tackle delayed discharges

Improved care in the home

Wider options for carer breaks and respite

Meet crisis needs and higher levels of support

Dementia care pathway

Population requiring inpatient care

Population experiencing an episode of crisis

Population with in Mental health care clusters 19-21

Population with dementia diagnosis

Population with dementia risk factors – age, vascular health etc

Population of Dorset

Each person will have a different profile of need over time, some with multiple periods of high need

Dementia – High need (Inpatient)

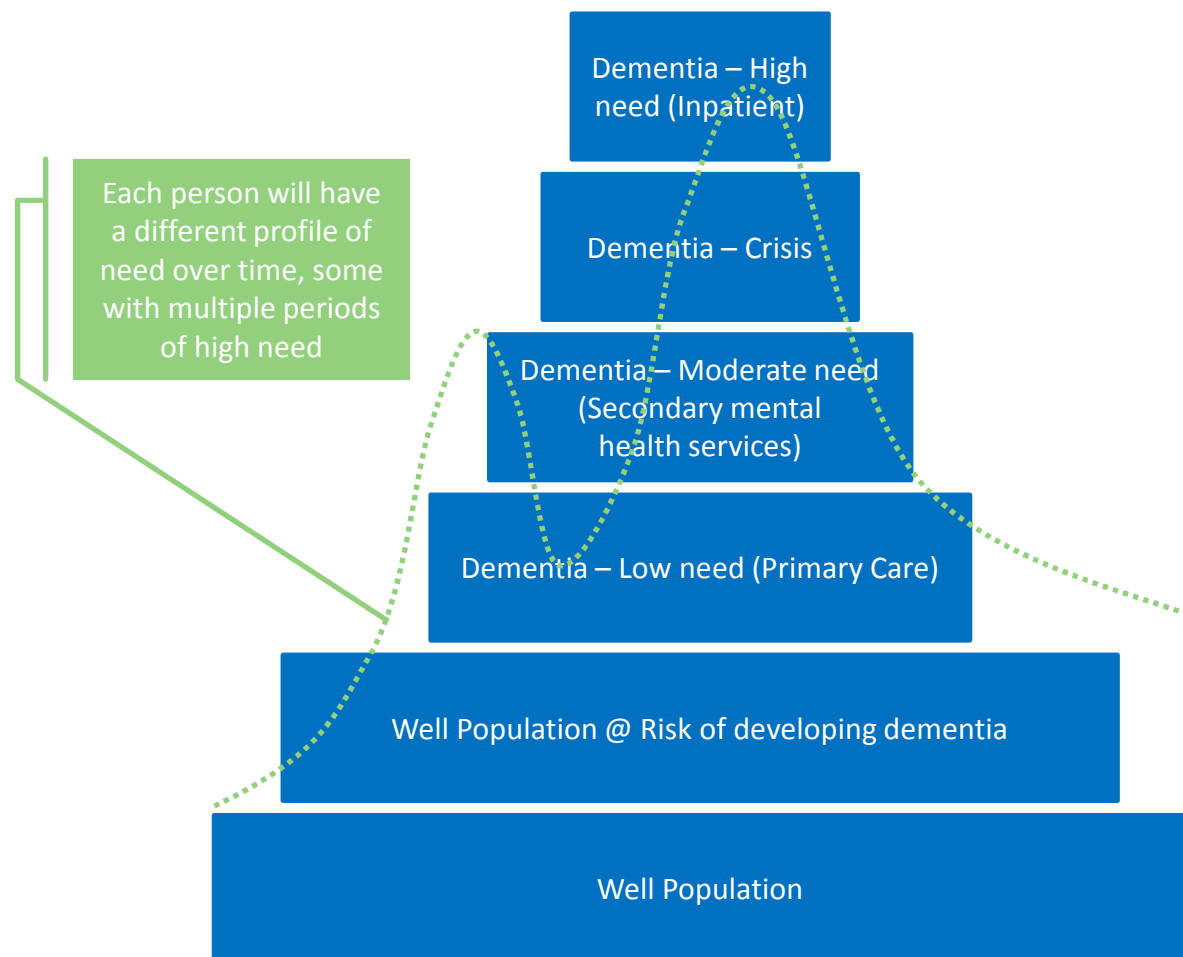
Dementia – Crisis

Dementia – Moderate need (Secondary mental health services)

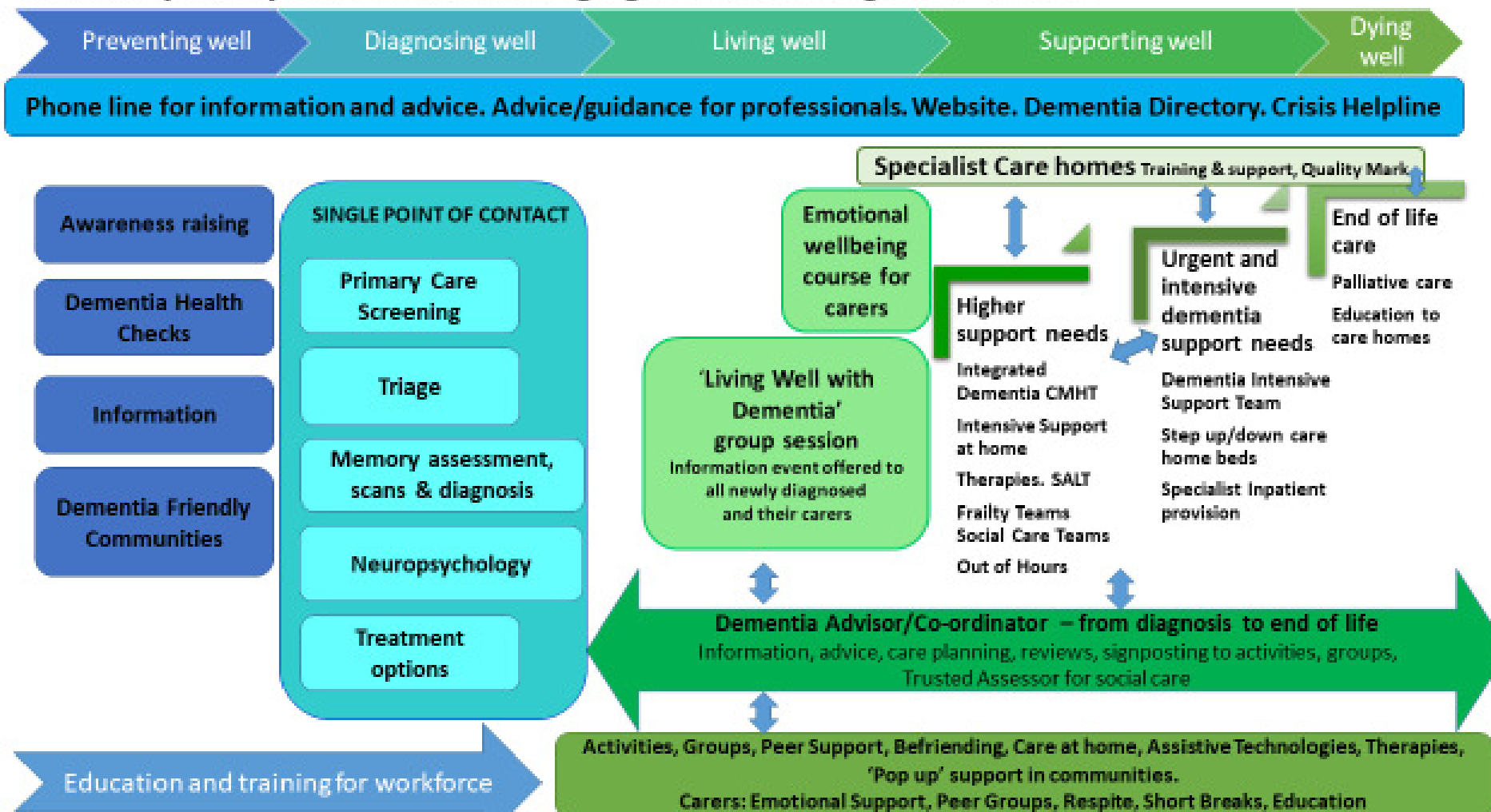
Dementia – Low need (Primary Care)

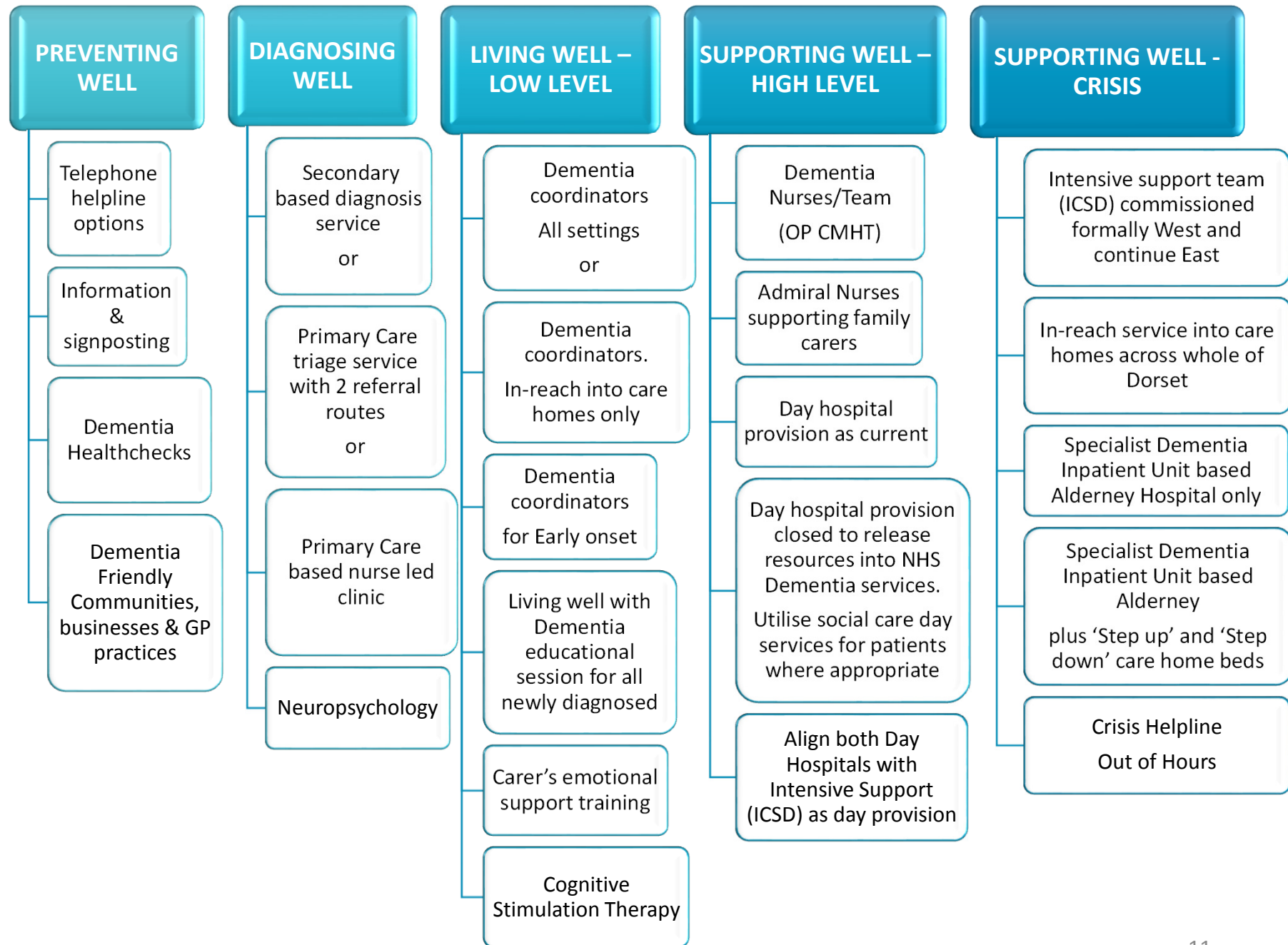
Well Population @ Risk of developing dementia

Well Population



Summary of key elements of emerging 'Dementia Together' Service





Next steps

Deliverables	Completion date
Stage 3: Design and Modelling Shortlisted and costed model options Strategic Outline Case with model options	June 2018
Stage 4: Approvals and Consultation	December 2018
Stage 5: Evaluation of consultation and fully costed Business Case	March 2019
Stage 6: Procurement and secure service provision	September 2019
Stage 7: Mobilisation and contract management	To follow